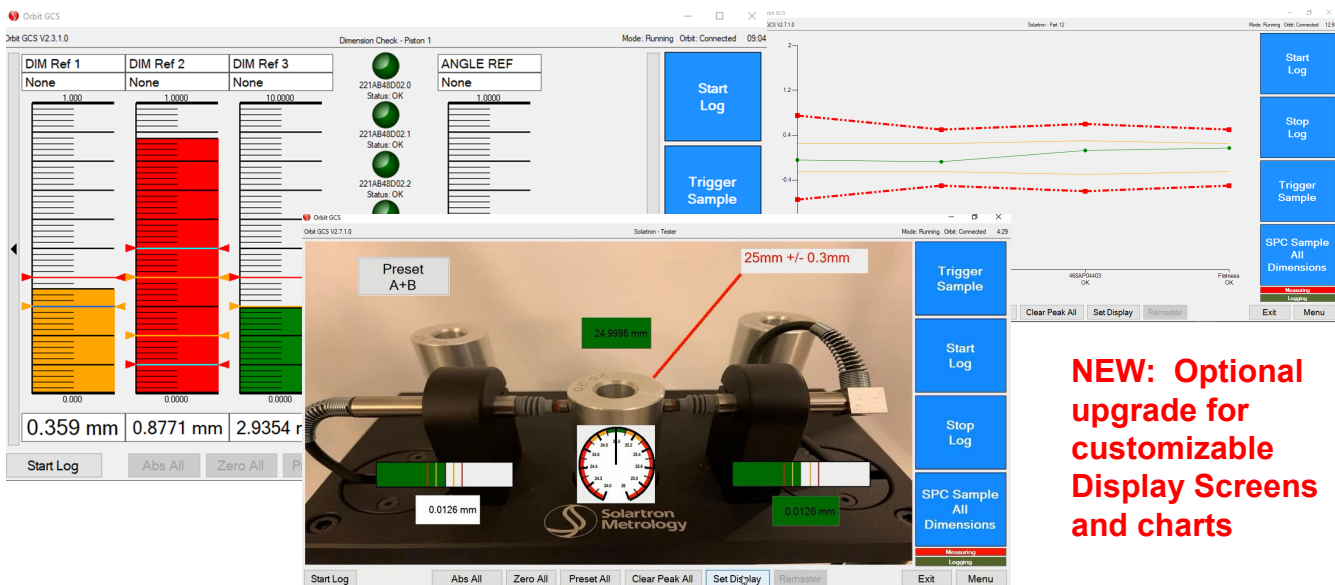


## Gauge Computer Software

Orbit GCS is an advanced gauging tool supplied as a downloadable software pack from the Solartron website. In conjunction with the Orbit® Measurement Network, it can be used to monitor inline and post process manufacturing dimensions and record measurement data. It now includes Diagram and Charting capabilities in which pictures or graphics can be imported and displayed on screen.



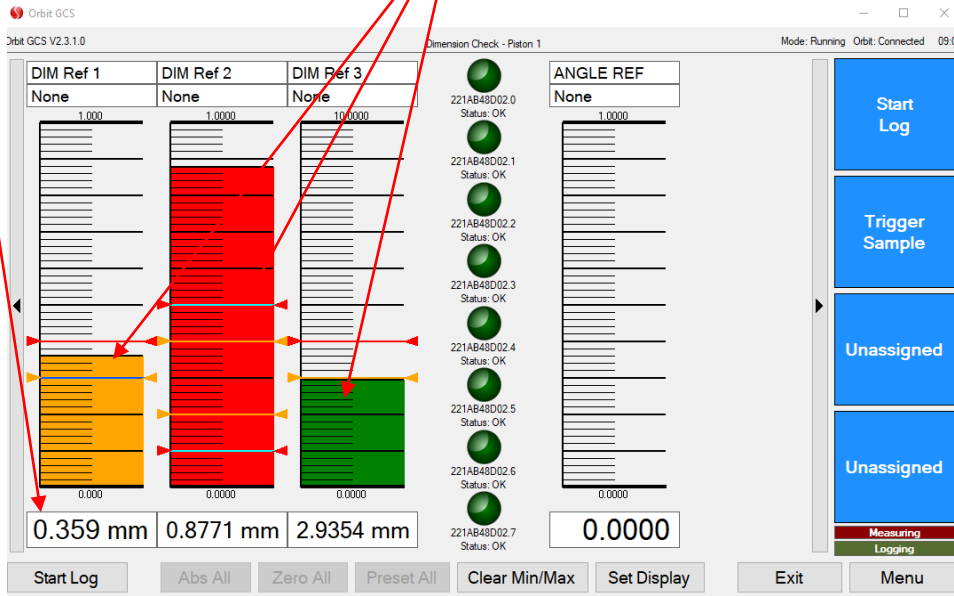
**NEW: Optional upgrade for customizable Display Screens and charts**

### Key features:

- Flexible and easy to use. Online training videos available.
- Simple installation onto any Windows 10 Computer
- Interface up to 150 Orbit® Digital Sensors, which includes specialist transducers like Block Gauges, Flexures, Mini Probes, Laser, and Linear Encoder.
- Data from Solartron's Wireless Hand Tools can be drawn via the Wireless Communication Module (WCM)
- GCS will interface with 3<sup>rd</sup> party sensors via the Encoder Input Module, Analogue Input Module, Air Gauge Module, and others.
- Logic functions with control of Input and Outputs via Solartron Digital Input Output Modules (DIOMs)
- Log Data to Microsoft Excel<sup>®</sup> formatted files for further processing
- Upgrade options for Complex Math Formulas, Mastering, Statistical Process Control (SPC), as well as custom Diagrams and Charts
- Now available in **Japanese and Chinese** Languages. More languages coming soon.

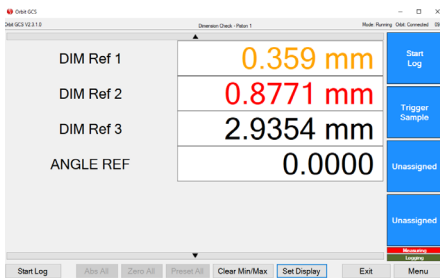
## Multiple Display Options

Dimension (with analogue bar and DRO)      Status Indications (E.g. In or Out of limit)      Programmable Buttons

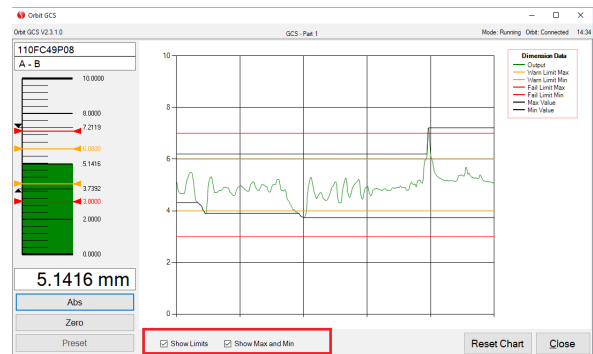


Fixed Control Buttons

### DRO Display Option



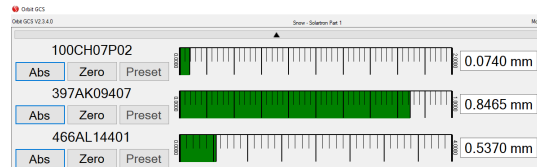
### Detail screen for viewing data trends



### Save to Excel File

Filename	Piston						
Log Started	21/05/2019 09:10						
Logging Mode	Fixed Number of Readings						
Limit Table	DIM Ref 1	DIM Ref 2	DIM Ref 3	ANGLE REF			
Warning Max Limit	0.3	0.4	3	Disabled			
Warning Min Limit	0	0.2	0	Disabled			
Fail Max Limit	0.4	0.5	4	Disabled			
Fail Min Limit	0	0.1	0	Disabled			
Count	Time (ms)	Trigger	DIM Ref 1	DIM Ref 2	DIM Ref 3	ANGLE REF	
1		0 Timer	0.359	0.877	2.9354	0	
2		1000 Timer	0.359	0.877	2.9354	0	
3		2000 Timer	0.359	0.877	2.9354	0	
4		3000 Timer	0.359	0.877	2.9354	0	
5		4000 Timer	0.359	0.877	2.9354	0	
6		5000 Timer	0.359	0.877	2.9354	0	

### Horizontal Display Option



# Simple Set Up Screens

Set up Orbit<sup>®</sup> Hardware

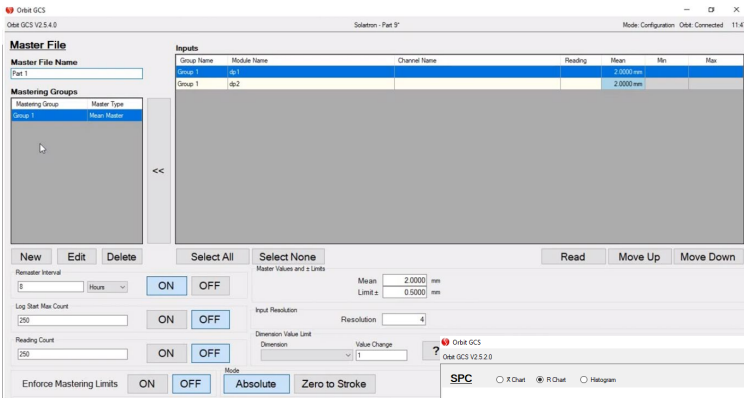
Configure Dimensions

Generate Custom Math Formulas (Upgrade Package 1)

View Data Logs (Registered Version)

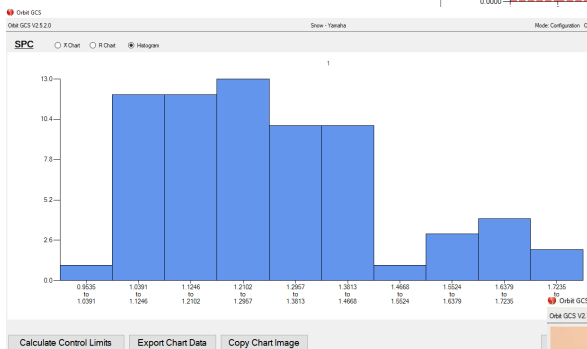
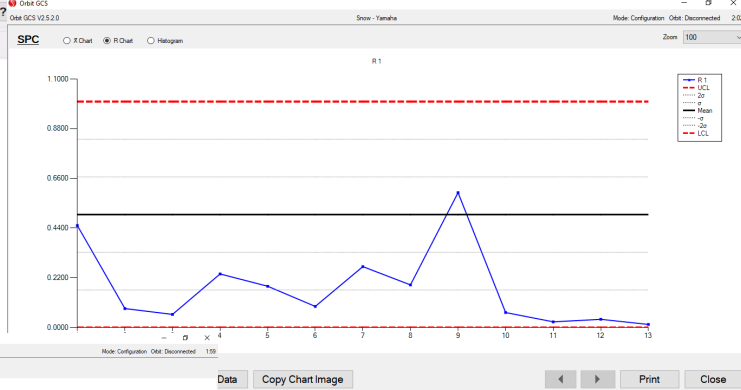
Count	Time (ms)	Trigger	100CH07P02	466AL14401	a-b
1	2800	SoftKey 4	0.7029	1.2182	1.9211
2	3100	SoftKey 4	0.7157	1.2239	1.9397
3	3400	SoftKey 4	0.7374	1.2284	1.9658
4	3700	SoftKey 4	0.7895	1.2462	2.0357
5	3940	SoftKey 4	0.7728	1.2195	1.9923
6	4180	SoftKey 4	0.7696	1.2415	2.0110
7	4420	SoftKey 4	0.7702	1.2281	1.9983
8	4651	SoftKey 4	0.8108	1.2673	2.0781
9	4900	SoftKey 4	1.0751	1.4445	2.5196
10	5140	SoftKey 4	1.0010	1.3759	2.3789
11	5380	SoftKey 4	1.0144	1.4235	2.4379
12	5600	SoftKey 4	1.1161	1.4530	2.5691
13	5820	SoftKey 4	1.1364	1.4933	2.6296
14	6060	SoftKey 4	0.9903	1.3493	2.3396
15	6280	SoftKey 4	0.9836	1.3575	2.3411

# Mastering, SPC, and Diagram Upgrade Options



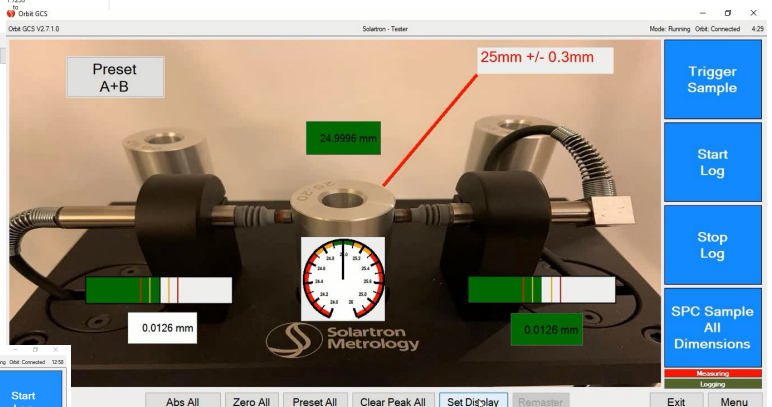
Upgrade Package 2:  
Track **Mastering** trends for gauges and different operators

Upgrade Package 3:  
SPC



Generate Xbar, R, and Histogram Charts

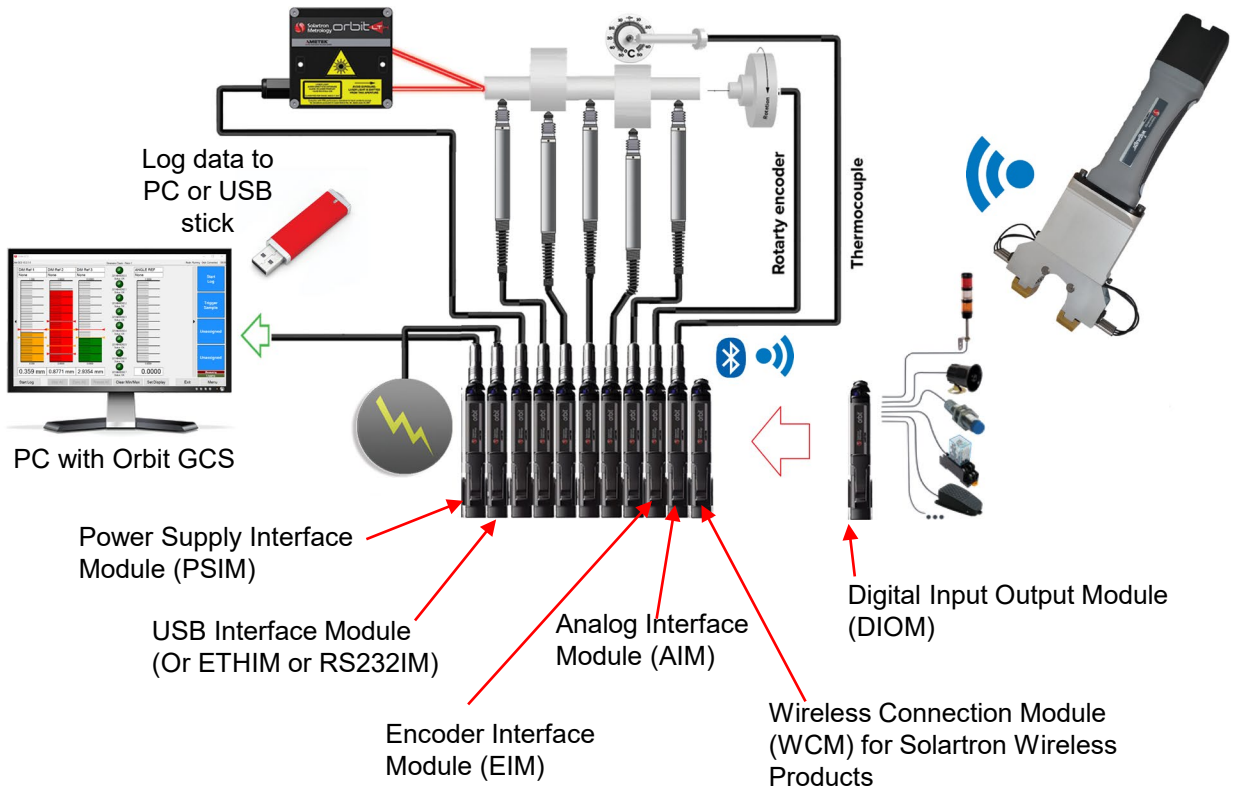
**NEW Upgrade Package 4:**  
Customizable Diagrams and Charts



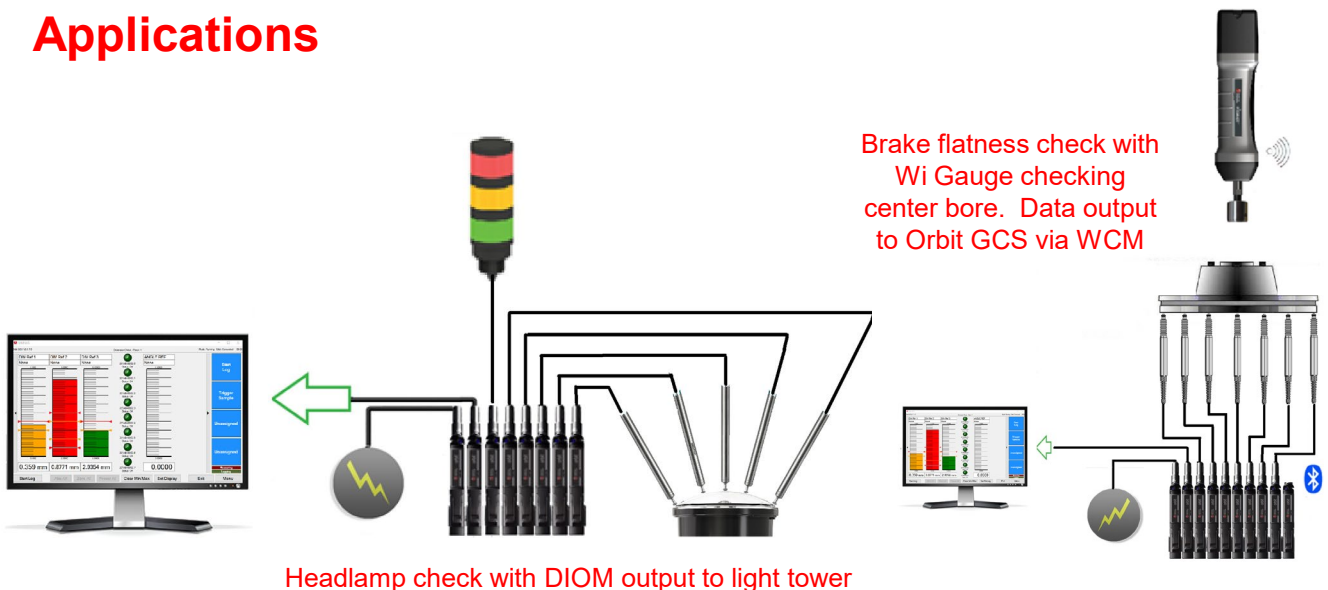
Import Photos or Diagrams and then place custom Readings, Bar Graphs or Dial Gauges on screen



## Full Orbit<sup>®</sup> Connectivity



## Applications



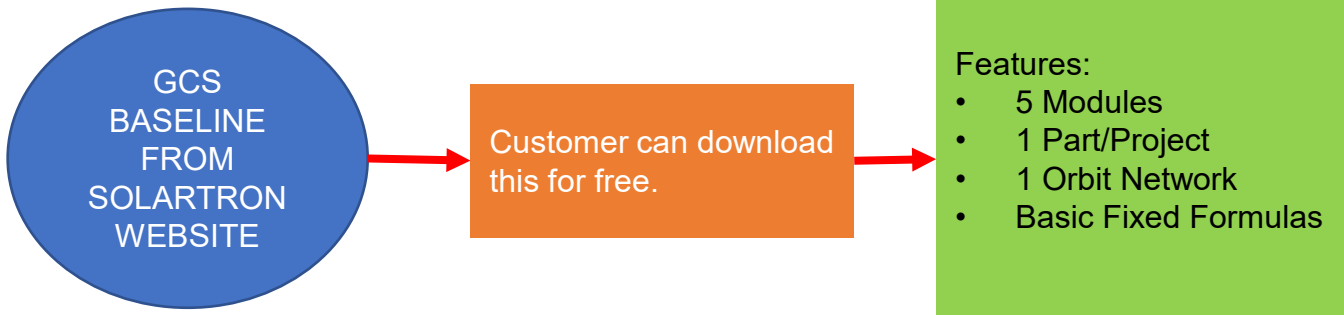
For a full description of the Orbit GCS please refer to the Orbit GCS Manual Number 503585 available on the Solartron Website. [\(Click Here\)](#)

## Orbit GCS Software Levels

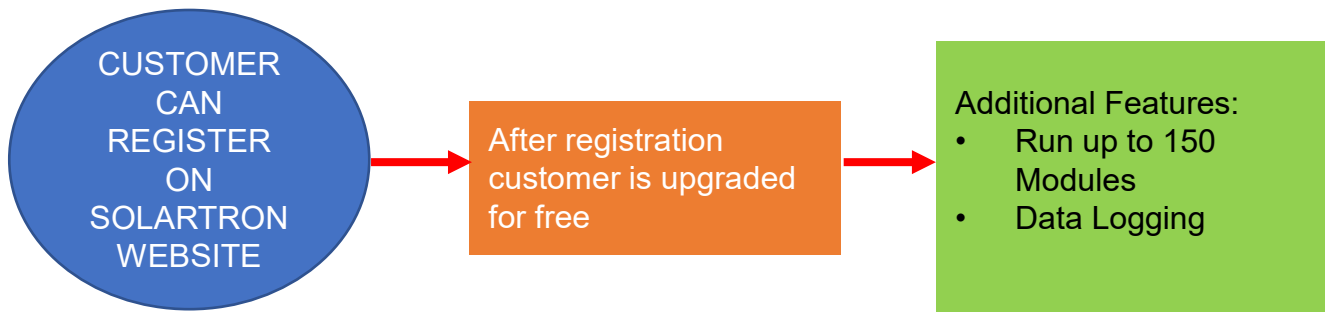
The Orbit GCS can be downloaded from the Solartron Website – please [Click Here](#)

Training on all packages is available on Solartron Youtube channel. Go to Solartron website for link.

### Orbit GCS - Baseline



### Orbit GCS – REGISTERED Version



#### Upgrade Package 1

- Custom Math Formulas
- 20 Orbit Networks
- 1000 Parts/Projects

#### Upgrade Package 2

- Part Mastering (Track Operators and Gauge Quality)

#### Upgrade Package 3

- Statistical Process Control (SPC)
- Xbar and R charts, Histograms

#### Upgrade Package 4

- Custom Diagrams and Charts

User may purchase upgrade packages for additional features. See Website for availability and instructions on how to purchase: [Click Here](#)

## Technical Specifications

Orbit Interface/Hardware Interface	Orbit GCS (Free)		Orbit GCS (Purchased)			
	Base	Registered	Upgrade Pk 1 Multiple Parts	Upgrade Pk 2 Mastering	Upgrade Pk 3 SPC	Upgrade Pk 4 Diags & Chrts
		Features above Base	Features above Orbit GCS Registered			
Number of Orbit Modules Supported	5	150				
Number of Orbit Networks Supported	1		20			
Orbit USBIM Compatible	√					
Orbit RS232IM Compatible	√					
Orbit ETHIM Compatible	√					
Orbit Wireless Interface (Note 1)	√					
USB Footswitch (Note2)	√					
<b>Measurement Features</b>						
32 Dimensions	√					
Programmable Warning an Fail Limits	√					
Measurement Logging		√				
No of Parts/Projects	1		1000			
Fixed Maths Formula	√					
Logic Functions	√					
Advanced Math Formulas			√			
Part Mastering				√		
SPC					√	
Zero	√					
ABS	√					
Preset	√					
Max/Min	√					
<b>Display Configurations</b>						
Vertical Bars	√					
Horizontal Bars	√					
Digital Readout	√					
Custom Diagrams on Screen						√
Custom Charts						√

Note 1: Allows connection to all Solartron Wireless Handtools and future products

Note 2: Generic USB Footwitch should be compatible, however Solartron have only tested those specified in the Orbit GCS Manual

Computer Requirements: Microsoft Windows 10, 64 Bit or 32 Bit

GCS Languages: English (UK), Japanese, Chinese. (Others coming soon)

## WorldWide Sales Offices



### UK Head Office and Factory

Solartron Metrology  
Steyning Way  
Bognor Regis  
West Sussex  
UK, PO22 9ST  
Tel: +44 (0) 1243 833333  
Fax: +44 (0) 1243 833332  
Email: [sales.solartronmetrology@ametek.com](mailto:sales.solartronmetrology@ametek.com)

### France

Ametek SAS  
Solartron Metrology Division  
Rond point de l'épine des champs  
Buroplus Bat D  
Elancourt  
78990  
France  
Tel: +33 (0) 1 30 68 89 50  
Fax: +33 (0) 1 30 68 89 99  
Email: [Info.solartronmetrology@ametek.fr](mailto:Info.solartronmetrology@ametek.fr)

### Germany

Ametek GmbH  
Solartron Metrology Division  
Rudolf-Diesel-Strasse 16  
40670 Meerbusch  
Tel: +49 (0) 2159 9136 500  
Fax: +49 (0) 2159 9136 505  
Email: [vertrieb.solartron@ametek.com](mailto:vertrieb.solartron@ametek.com)

### China

Ametek Commercial Enterprise (Shanghai) Co.,  
LtdPart A1, A4 2nd Floor  
Building No 1, No 526 Fute  
3rd Road East  
Shanghai  
Pilot Free Trade Zone  
200131  
China  
Tel: +86 21 5763 2509  
Fax: +86 21 5866 0969 Ext. 261/262  
Email: [china.solartronmetrology@ametek.com](mailto:china.solartronmetrology@ametek.com)

### USA

Solartron Metrology  
915 N. New Hope Road, Suite C  
Gastonia, NC 28054  
Tel: +1 800 873 5838  
Email: [usasales.solartronmetrology@ametek.com](mailto:usasales.solartronmetrology@ametek.com)  
[m](#)

### Japan

Ametek-Japan  
Solartron Metrology Division  
Tokyo Office  
Shiba NBF Tower (1F, 3F)  
1-1-30, Shiba Diamon Minato-Ku, Tokyo, Japan  
(P.C.105-0012)  
Tel: +81 03-4520-6654  
Email: [Mamoru.hasegawa@ametek.com](mailto:Mamoru.hasegawa@ametek.com)

### Thailand

Ametek - Thailand  
Solartron Metrology Division  
No. 89/45 Moo. 15 Enterprise park  
Bangna-trad road, Bangkaew, Bangplee  
Samutprakarn, Thailand, 10540  
Tel: +66 2 012 7500  
Mobile: +66 92 087 9222  
Email: [hidena.tanaka@ametek.com](mailto:hidena.tanaka@ametek.com)

Solartron Metrology also carries an extensive network of sales agents in all major countries. For a local contact, go to <https://www.solartronmetrology.com/contact/contact> or email at [sales.solartronmetrology@ametek.com](mailto:sales.solartronmetrology@ametek.com)